

# QuickWood System

## Edge Sander with Air Cushion Table

Model QTM1

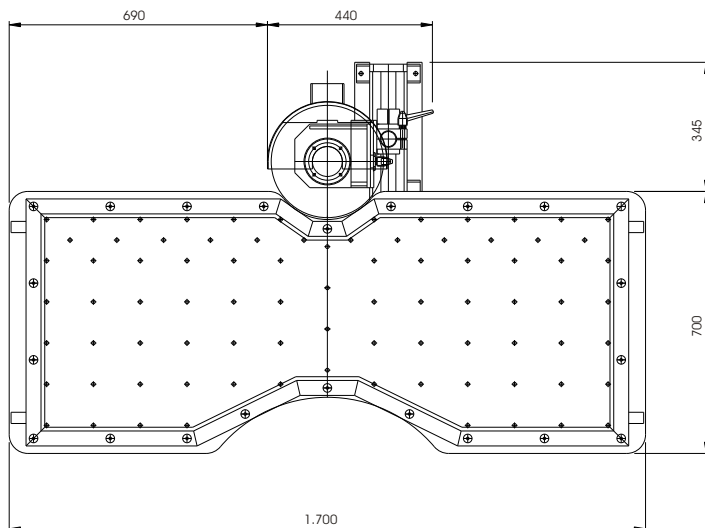
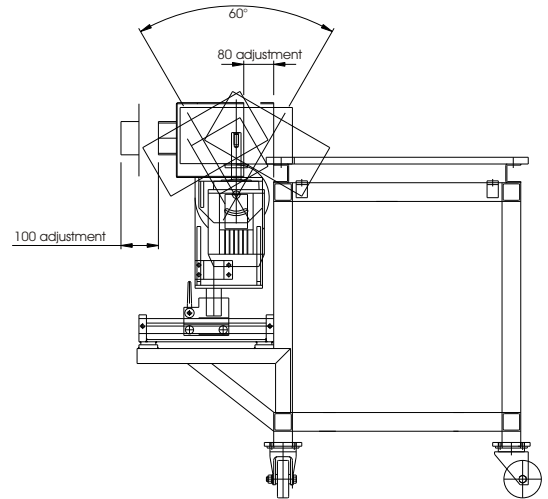
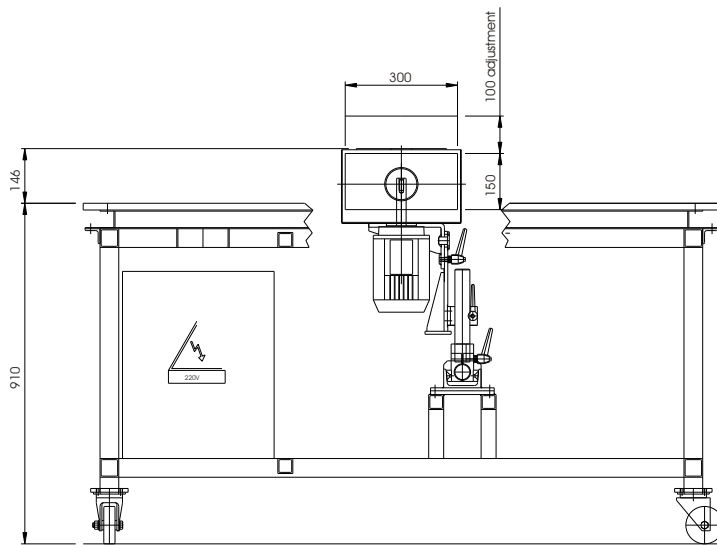


- Edge sander with air cushion table 1700 x 700 mm.
- Mounted on wheels with brakes.
- Revolvable spindle with a working height of 150 mm (optional double spindle).
- Infinitely variable adjustment of spindle by inverter, 200-1200 rpm, digital display.
- Optional, automatic interruption of spindle by magnetic clutch.
- Easy handling of heavy items, without effort or risk.
- The perfect machine for stairs.
- Possibility of extension by a 600 mm horizontal spindle. Model QTM2.
- Works with air pressure only.
- Prepared for all QuickWood abrasive tools.

**QuickWood**



# Technical Specifications



## Technical Specifications

Spindle motor, kW	0.75
Inverter for spindle, kW	0.75
Length of spindle, mm	150
Exhaust duct, mm	90
Air cushion table, mm	1700 x 700
Dimensions, mm	1700 x 1045 x 1046
Weight, kg	Approx. 200

# QuickWood

**QuickWood ApS**

Tinvej 4

P.O. Box 180

**DK-3060 Espergaerde - Denmark**

Tel.: +45 49 131948 • Fax.: +45 49 133191

E-mail: [qw@quickwood.dk](mailto:qw@quickwood.dk) • [www.quickwood.com](http://www.quickwood.com)

