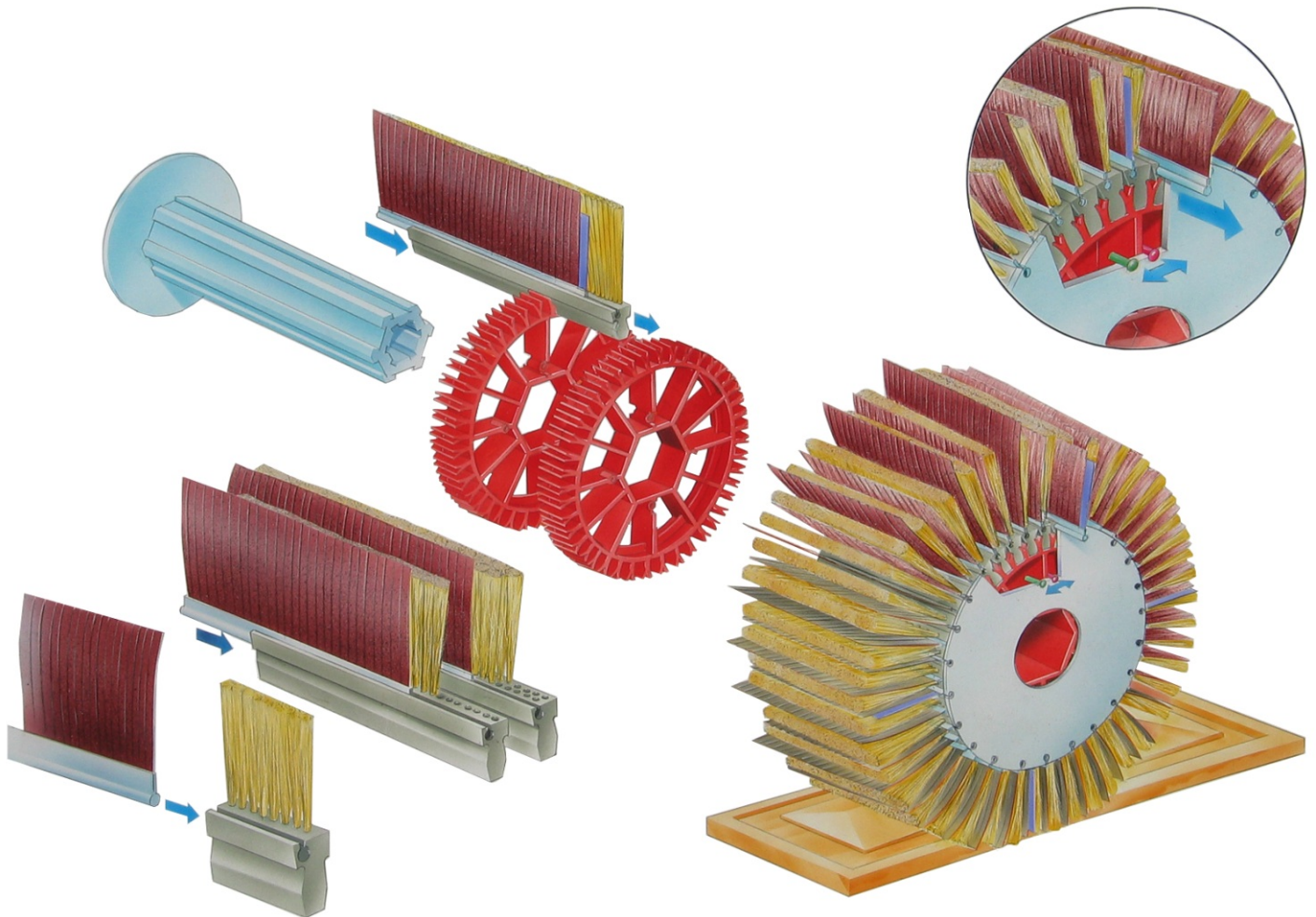


QuickWood System

Constant Quality

QUICK-Strip-System



QUICK-Strip System

- Consistent sanding speed.
- Easy to change abrasive strips.
- Index system for consistent sanding quality.
- Modular system.
- Profile fits QuickWood and other brands.
- Reusable brush. Huge savings.
- Unique system – you only change the abrasive.
- Colour indicator tells you when to change the abrasive.

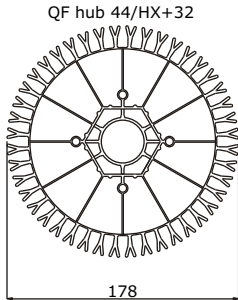
The Quick Strip System where sanding quality always stays the same. The unique Quick-Strip System gives you consistent sanding by replacing only half of the abrasive on each change over, thereby keeping the sanding speed the same. The new sanding system gives you huge savings over earlier systems by replacing only the sandpaper and not also the expensive brush. A colour indicator tells you when it is time to change and an index system tells you which papers to change. The modular Quick-Strip System works with QuickWood and earlier systems.

World-wide patent pending.

QuickWood

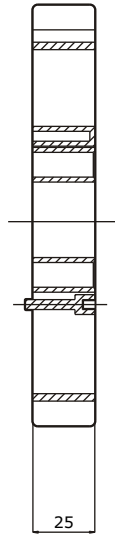


Technical Specifications



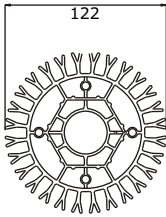
QF hub 44/HX+32

Hex. Alu-Adapter for existing spindles up to ø 40 mm available.

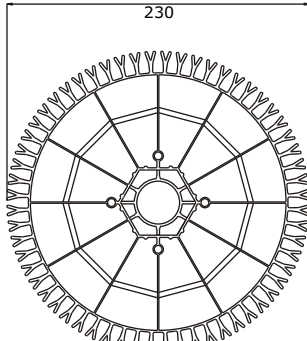


25

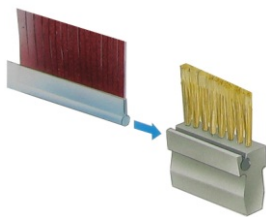
Quick-Flex hub Standard	
Quick-Flex hub 28 segments	Quick-Flex hub 44 segments
Dia.: 240/290/340/390 Bore: HX + 50 + 32	Dia.: 296/346/396/446 Bore: HX + 50 + 32
Quick-Flex hub 60 segments	The hubs are 25 mm wide and can be put together to any size. ø 32, 50 und Hex. Spindle length ÷ 25 = number of hubs
Dia.: 348/398/448/498 Bore: HX + 50	
Width of strips: 4 - 6,5 - 12,5 - 25 - 50 mm	
Grits delivered as standard: AIO: P60 - P600 SiC: P180 - P600	
Length of brush profiles: 50 - 3000 mm Length of abrasive profile: 50 - 6000 mm	
Calculation of quantity QUICK-Strip: spindle length mm * number of segments = Total length mm Calculation of outside diameter: $\sigma\text{-hub} + (2 * 10) + (2 * \text{brush length}) + (2 * 9) = \text{Outside diameter}$	



QF hub 28/HX+32



QF hub 60/HX



Length of sisal brush 40 mm
Sanding and sealer sanding of flat items
Effect: very strong



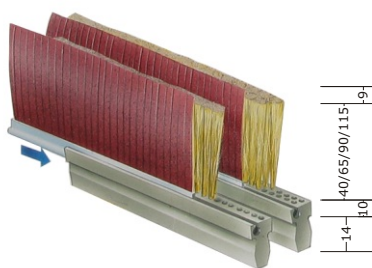
Length of sisal brush 65 mm
1st choice, very flexible
Effect: Universal



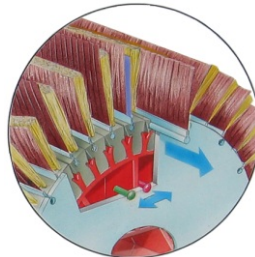
Length of sisal brush 90 mm
Soft sanding and sealer sanding of profiled items
Effect: Medium



Length of sisal brush 115 mm
Super soft sanding and sealer sanding of deep profiles
Effect: Fine

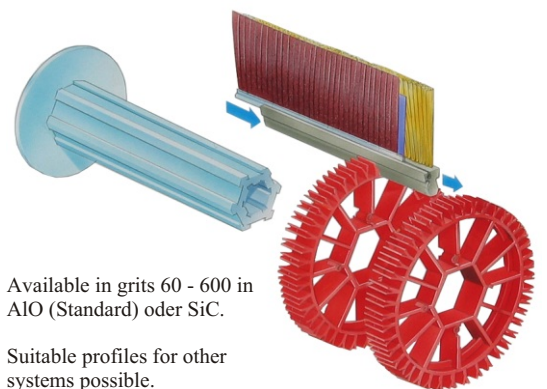


Normal = 1 x sisal, standard
Dense = 2 x sisal, thereby even harder and very suitable for MDF and UV lacquer.



End cap with index in order to change the QUICK-Strip direct on the shaft.

Indicator with colour reference when to change.



Available in grits 60 - 600 in AIO (Standard) oder SiC.

Suitable profiles for other systems possible.

QuickWood



Sand-Tech Inc
805 Marathon Parkway, Suite 110
Lawrenceville, GA 30045

Phone:(770) 682-8863 • Fax:(770) 682-3960
Email: info@quickwood.com • Homepage: www.quickwood.com